

AGA KHAN WALK REVITALIZATION PROJECT

INTERNATIONAL CASE STUDY: CIRCULAR QUAY SYDNEY AUSTRALIA

It serves as a gateway, connecting visitors to Sydney's major attractions - Sydney Harbour, Sydney Opera House, Sydney Harbour Bridge and The Rocks. It's a vibrant, bustling hub with ferries leaving every few minutes to different parts of the harbour, including Manly, Watsons Bay, Mosman and Taronga Zoo. Aside from catering to tourists, it is a vital link for Sydney siders commuting to and from work and as a gateway for the thousands of locals journeying to Manly's surf beach on weekends.

Circular Quay is at the foot of the central business district and the older, historic end of the city. Buses depart here for Bondi and the eastern suburbs. It is also a major railway station on an underground railway known as the City Circle, which loops around the CBD.

On weekends, it throbs with activity. On special event occasions, people mill through the area in their thousands.

Everyone loves The Quay. Buskers take turns at setting up on the western side and draw crowds. Some of them are good and people tend to linger longer than they normally would.

Much of its appeal lies in the great many outdoor eating areas set up nearby. On the eastern side, there are banks of open-air restaurants that take up much of the upper and lower promenades between Wharf 2 and the Opera House. The walkway that leads to the Sydney Opera House continues on around the foreshore to the sweeping green spaces of the Royal Botanic Gardens.

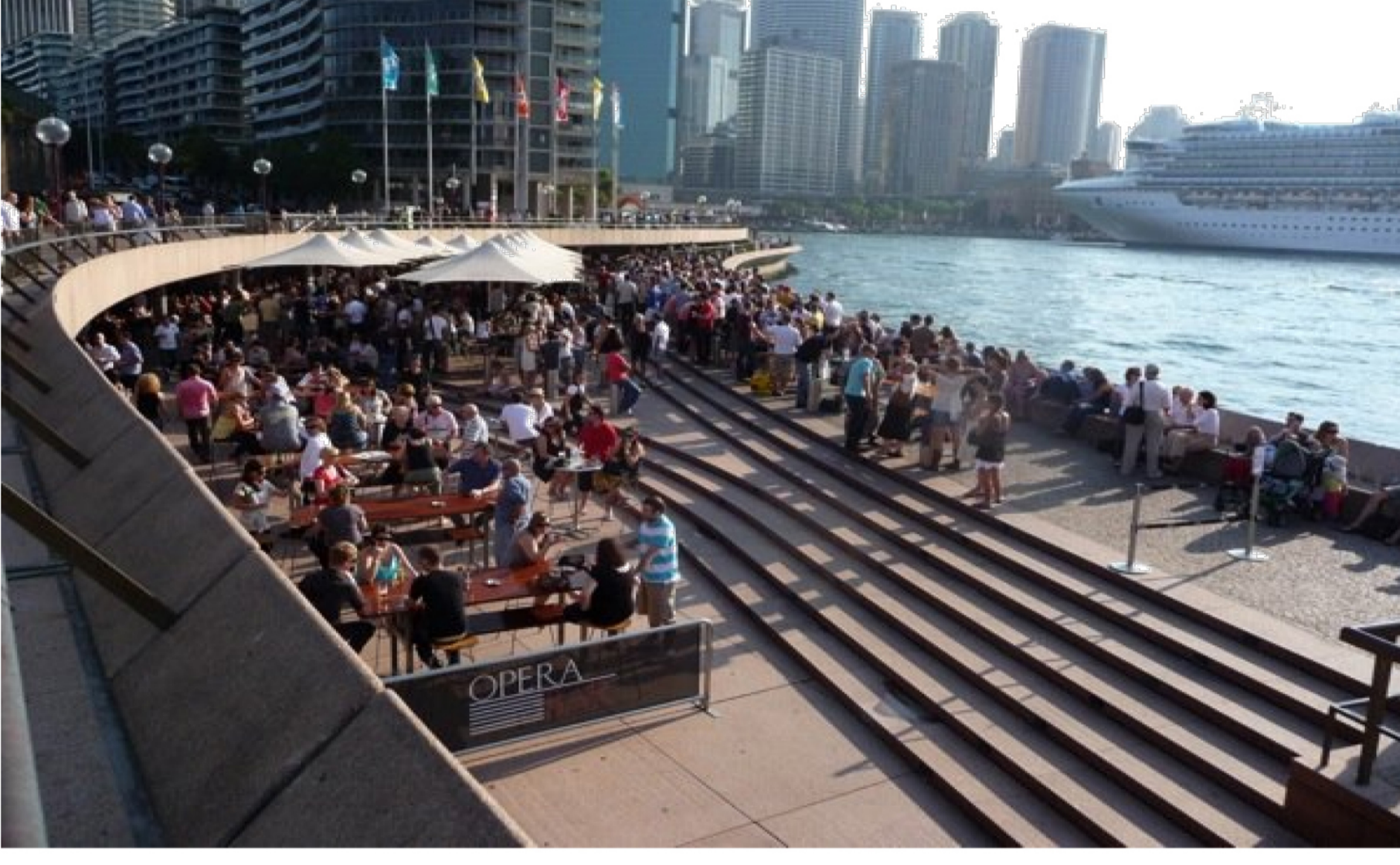
There are great views of the Harbour Bridge, day and night, from all points of Circular Quay.

It is a vibrant pocket of cafes, restaurants, shops and weekend market stalls set against a backdrop of historic buildings and mysterious passageways. One of the most popular eating areas is a bank of restaurants set up in a row of former wharves. This part of Sydney is one of the oldest, most attractive and most interesting.

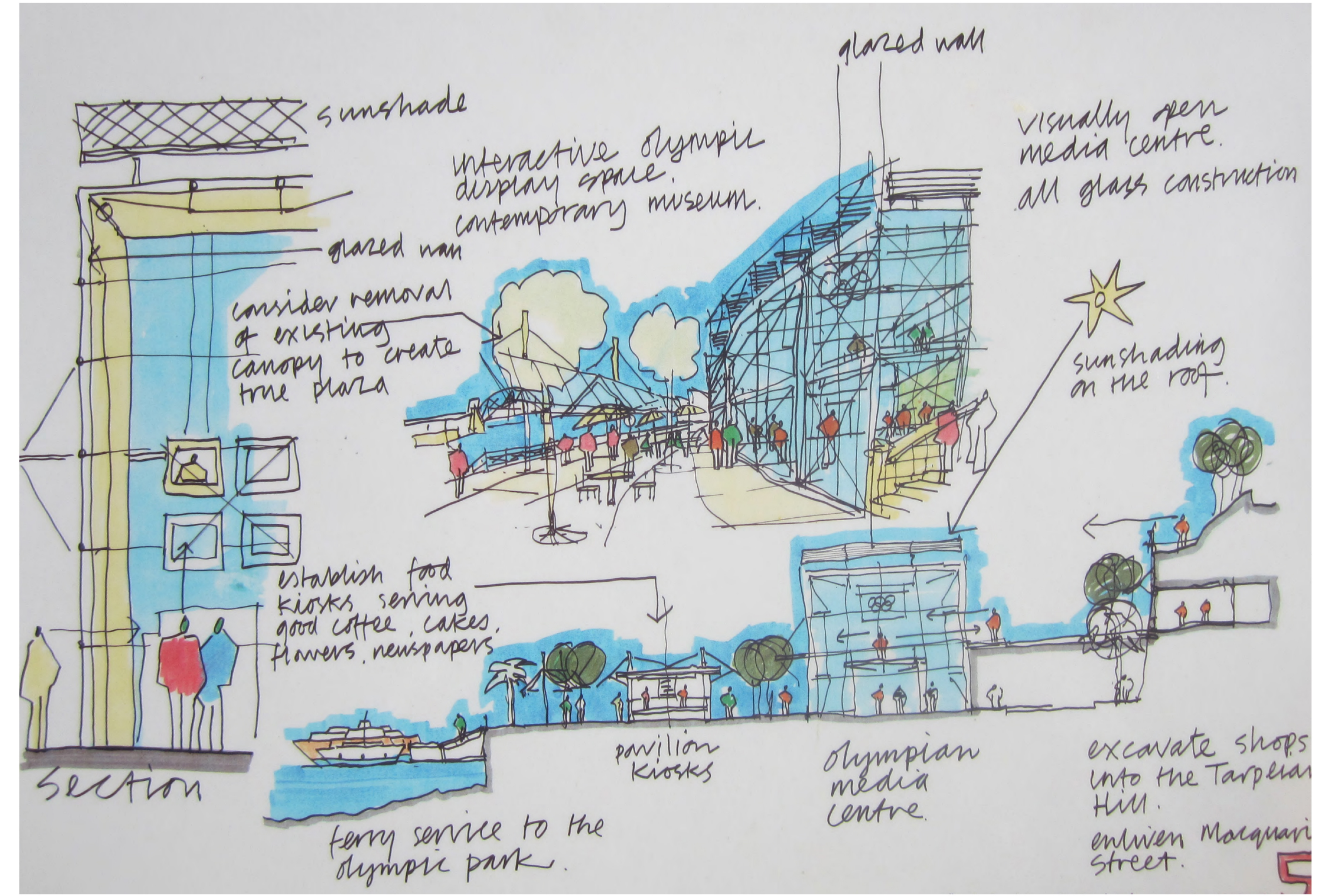
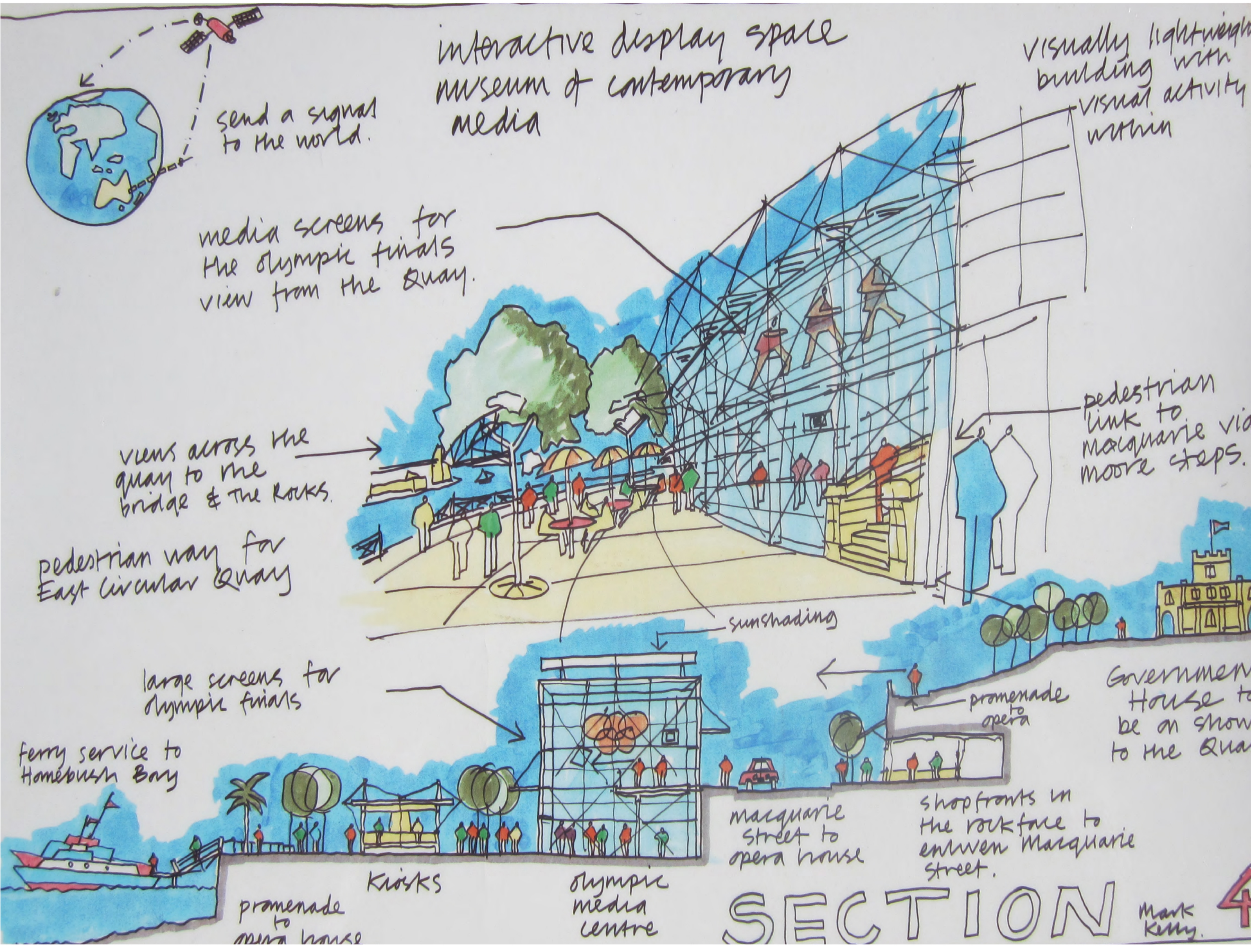
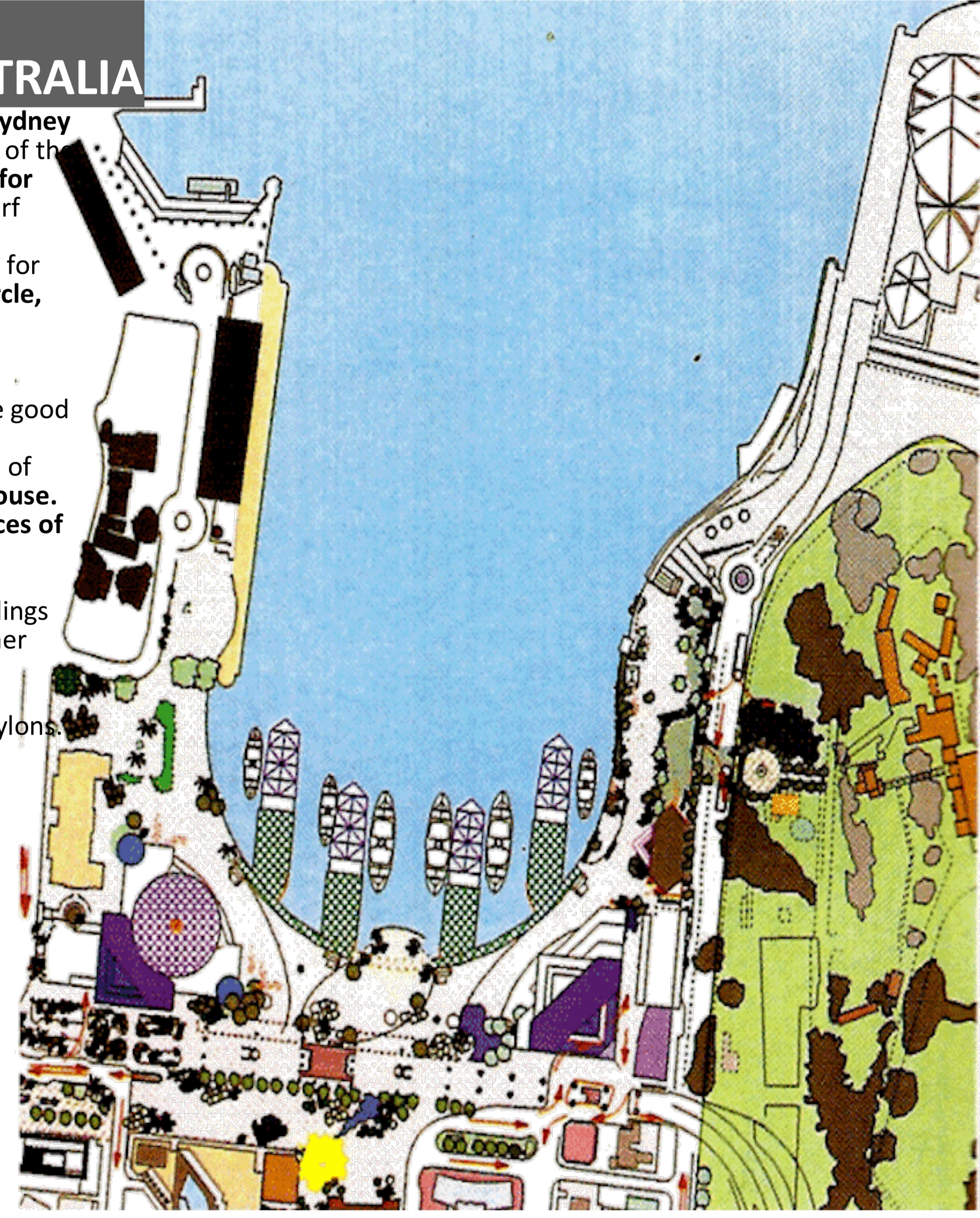
Continue on along the foreshore and you soon find yourself under the Harbour Bridge and beside its huge stone pylons.

This area, known as Dawes Point, is a popular setting for wedding photographs.

Underground eating area



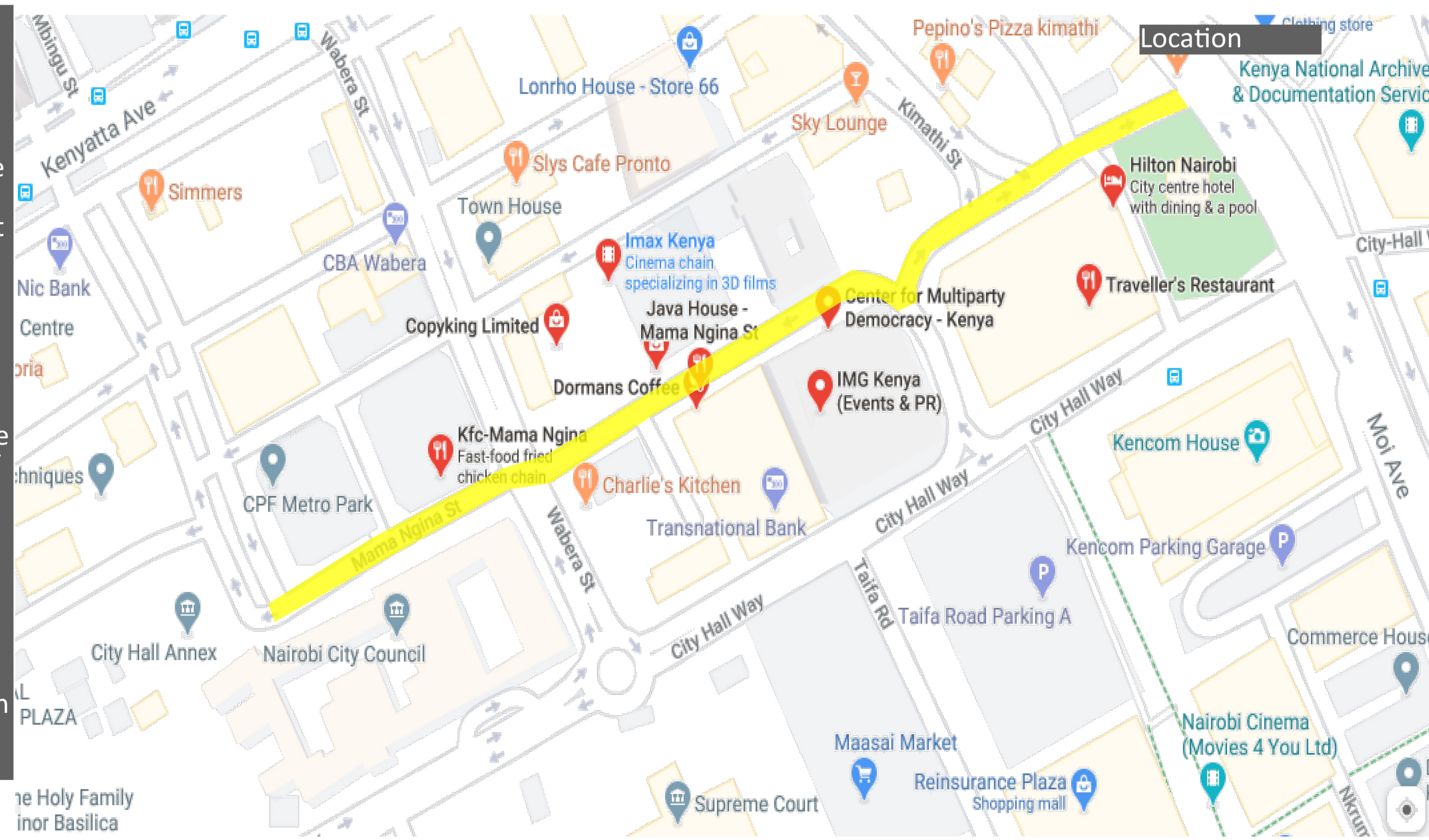
Accessible roof



LOCAL CASE STUDY: MAMA NGINA STREET

In the 1990's and early 2000's, the street was grappling with rising crime and violence vacated in the evenings. 72% of all residents avoid travelling and working after dark in the street. Former Deputy Mayor of Nairobi, Joe Aketch, was adamant to turn the city around and create a 24-hour economic hub, envisioned in the Vision 2030. The restaurants and cafés were closed to the street and were only inhabited by security guards and homeless families. These changes would allow for more flow and ease of movement. Additionally, benches were placed at regular intervals in shaded areas, allowing people to sit and enjoy the street. The street lighting was also enhanced, to create more security and a better perception of safety while using the place at night.

Another proposal was to offer more space to the cafés, allowing customers to spill over onto the sidewalk, in hopes of creating more eyes on the street and making passers-by feel safer in the evenings. Unfortunately, the city by-laws—dating back to the 1950's and 1960's—did not allow for this. Many of the old colonial by-laws are still in effect today, and many effectively hinder uses of public space. The Council has started a process of reviewing the out-dated by-laws but has not yet approved any changes. Despite setbacks with the by-laws, Mama Ngina Street has become a pleasant and well-utilized public space in the city. Several new bars have opened, enhancing the evening program on the street, and the street vitality has drastically improved. The changes in traffic flow and sidewalk space, plus lighting and street furniture, has resulted in a very vibrant area of the central business district. More people meet, sit, and enjoy the street. Now it's common to see people congregate in one of the corners to discuss various happenings and current affairs, particularly socio-political issues.



Street lighting to enhance safety



Shops with large display windows



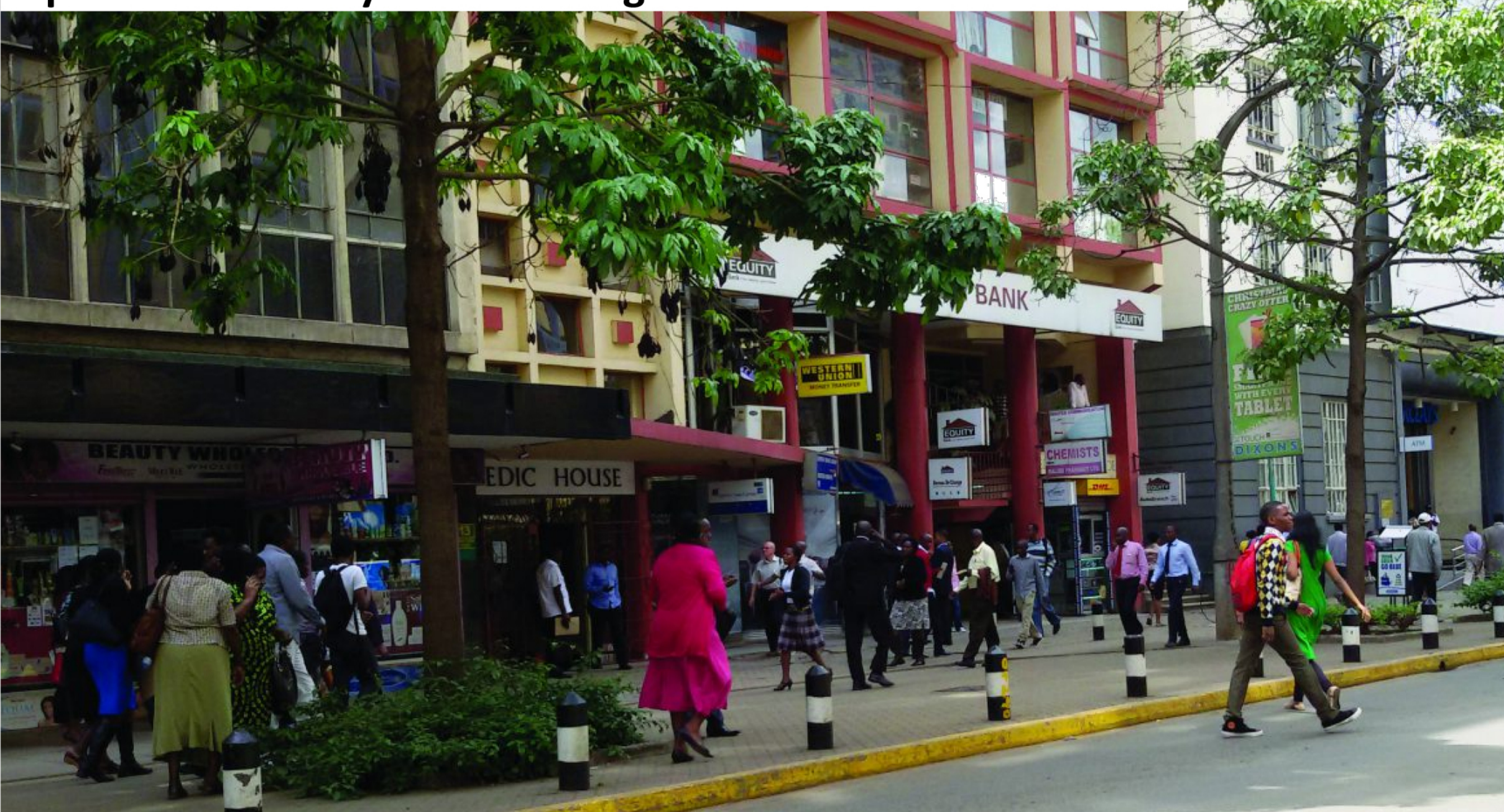
Busy retail shop



Meetings on the street



Expanded walkway shaded using trees



Accessibility



Active night life



Active night life

