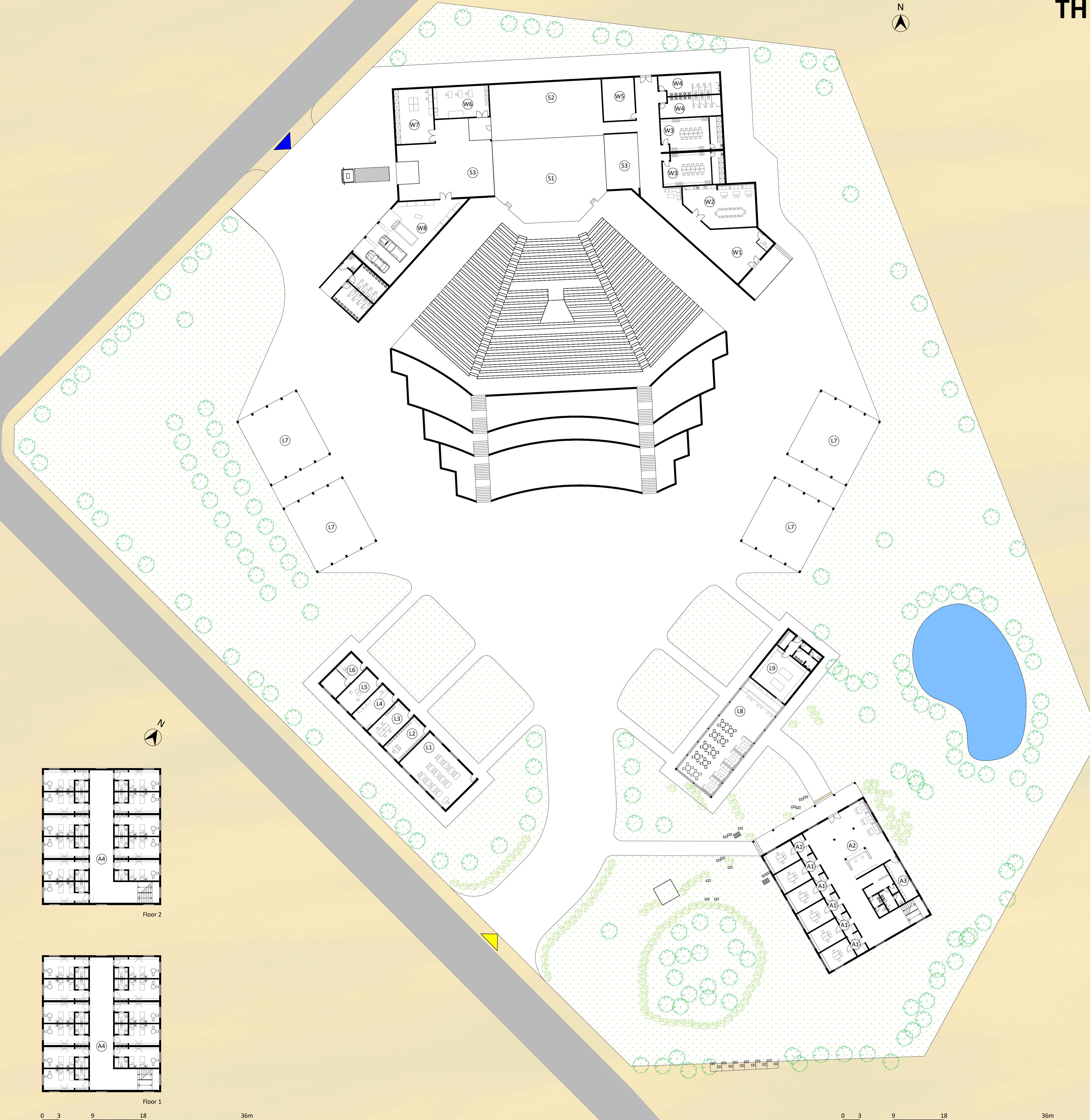


THE GREEN AMPHITHEATRE

Ougadougou - Burkina Faso



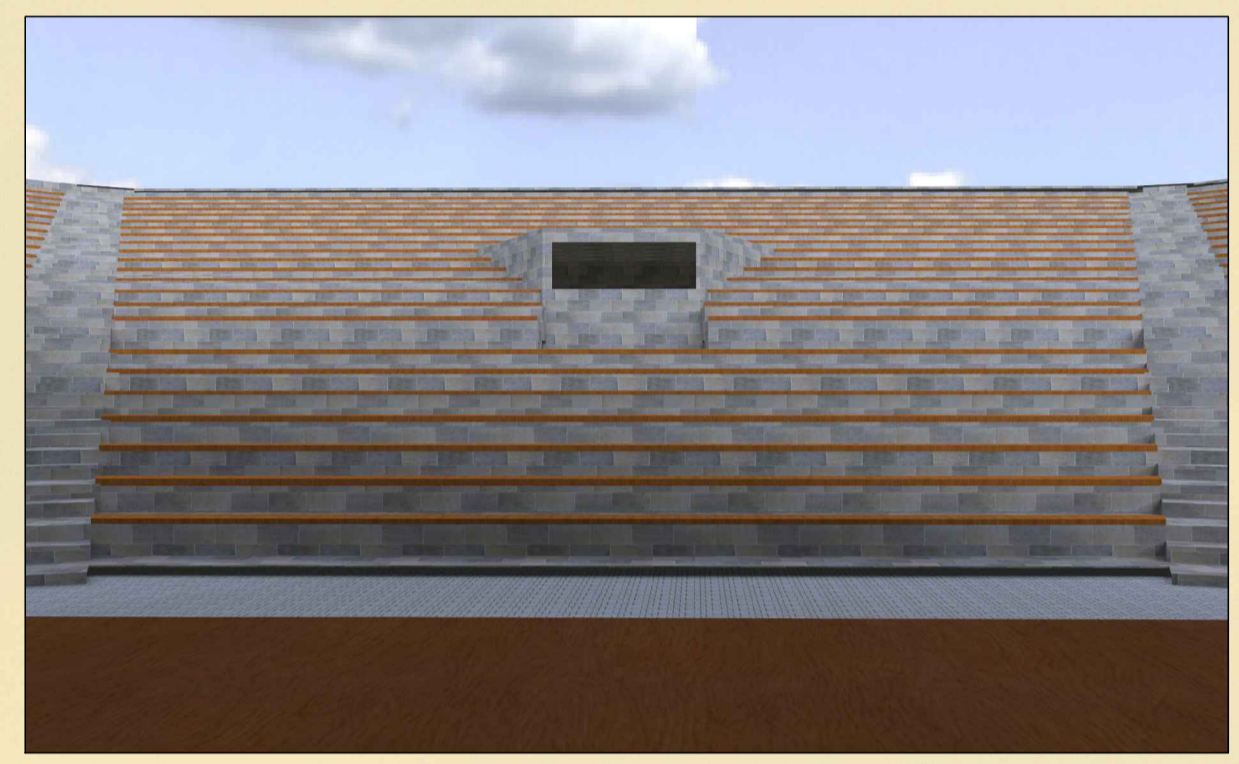
| | | |
|----|-----------------------------------|--------------------|
| W1 | Entrance | 89 m ² |
| W2 | Meeting room | 98 m ² |
| W3 | Dressing room | 70 m ² |
| W4 | Restroom | 43 m ² |
| W5 | Room for technicians | 47 m ² |
| W6 | Sewing workshop | 60 m ² |
| W7 | Workshop and storage of equipment | 70 m ² |
| W8 | Garage parking | 162 m ² |

| | | |
|----|------------|--------------------|
| S1 | Main stage | 305 m ² |
| S2 | Back stage | 165 m ² |
| S3 | Side stage | 66 m ² |

| | | |
|----|--------------------|--------------------|
| L1 | Modular media room | 100 m ² |
| L2 | Archive room | 32 m ² |
| L3 | Office | 32 m ² |
| L4 | Photo studio | 32 m ² |
| L5 | Video editing room | 32 m ² |
| L6 | Music studio | 32 m ² |
| L7 | Educational space | 173 m ² |
| L8 | Restaurant | 180 m ² |
| L9 | Kitchen | 91 m ² |

| | | |
|----|-----------------------|--------------------|
| A1 | Administration office | 35 m ² |
| A2 | Lobby | 160 m ² |
| A3 | Luggage storage | 22 m ² |
| A4 | Accommodation | 545 m ² |

- ▲ Main entrance
- ▲ Vehicle access



A view from the stage. The stage is 15m deep, 18m wide and 10m high. The performance surface is made of sheet vinyl. This material is suitable for dance performances.



A view from the green terrace to the educational spaces where artists learn different disciplines as dance, theatre, music, circus and puppets. Also this spaces can be used for other activities like music gigs and different performances. The spaces are open and the guests can watch the activities.



A view from the mini lake surrounded by trees - a place where the artists, guests or other visitors can use this place for relaxing, meeting each other, and other activities.

