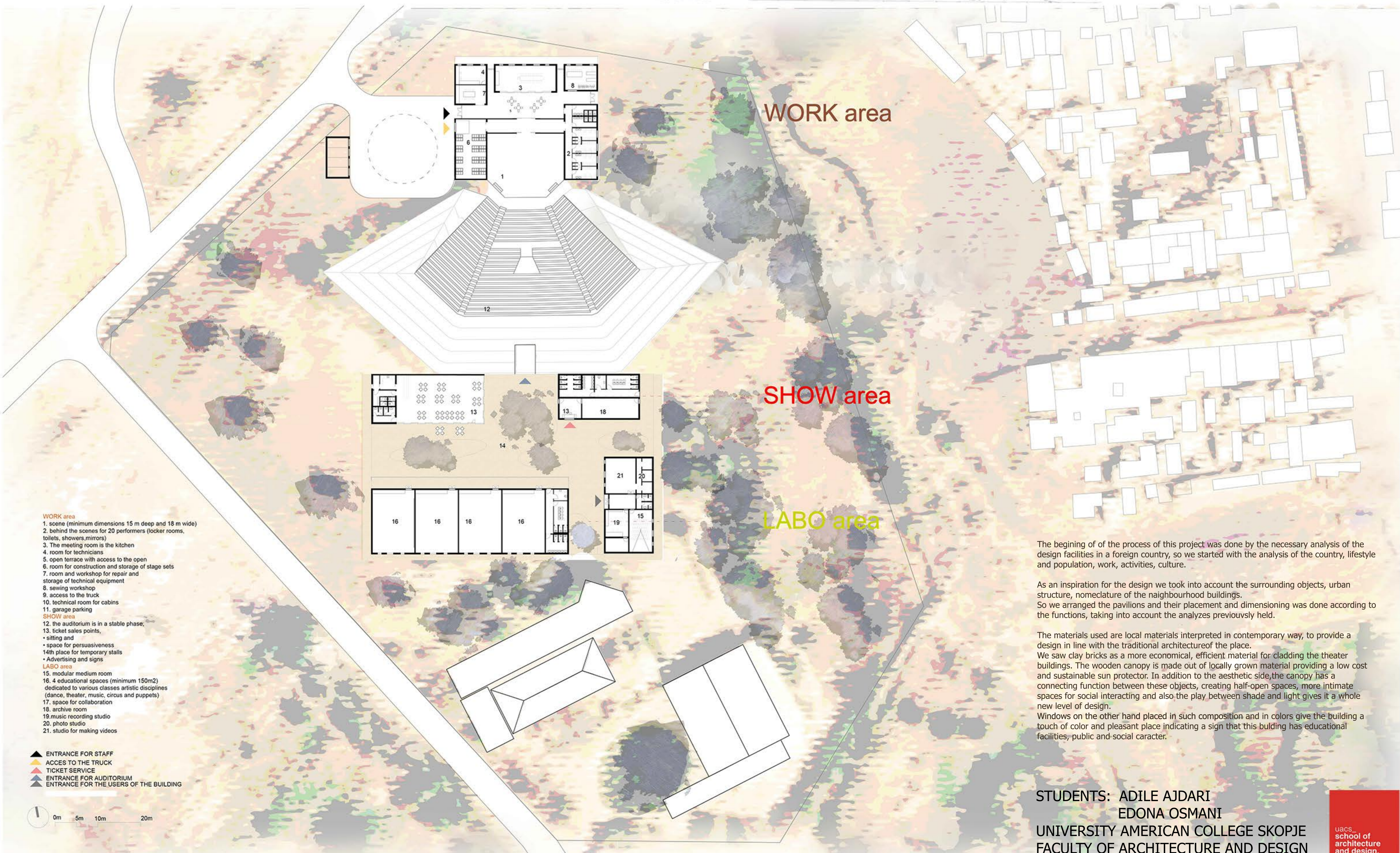
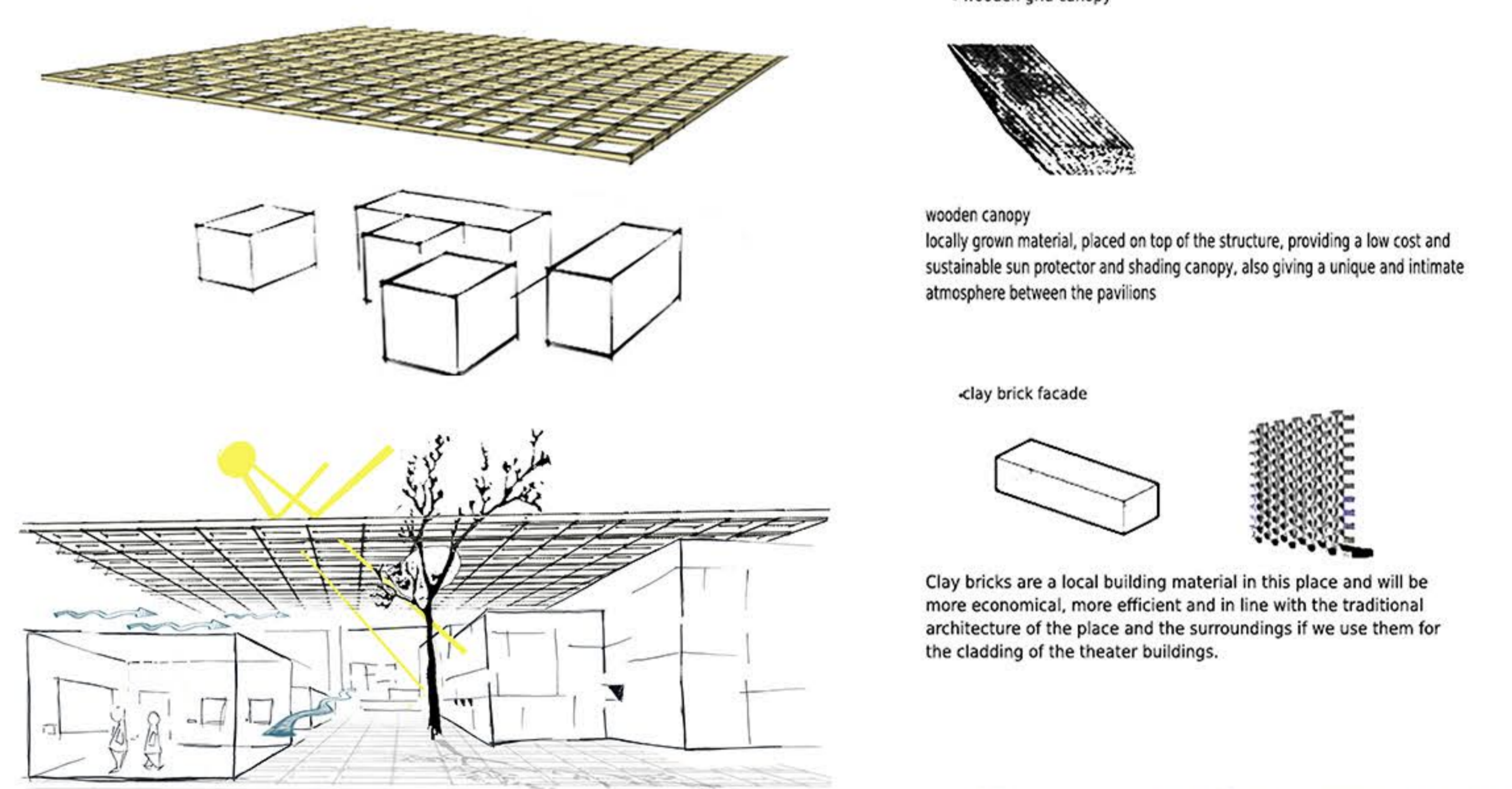
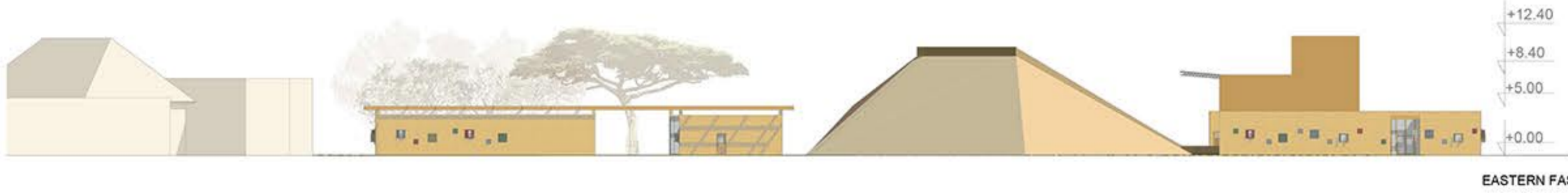
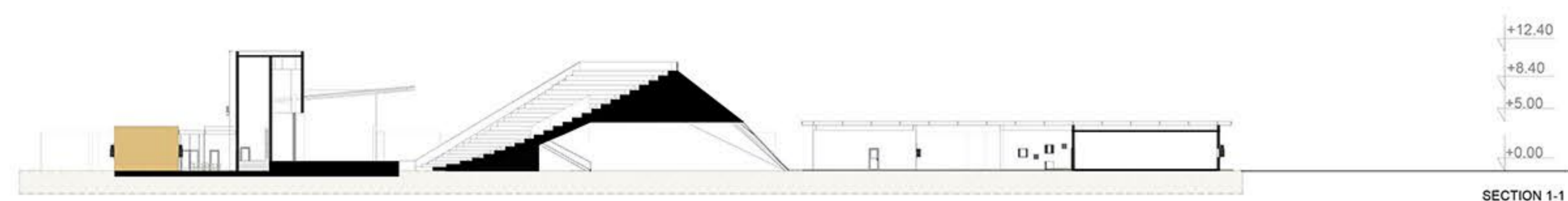


THEATRE POPULAIRE IDEA(L)



The beginning of the process of this project was done by the necessary analysis of the design facilities in a foreign country, so we started with the analysis of the country, lifestyle and population, work, activities, culture.

As an inspiration for the design we took into account the surrounding objects, urban structure, nomenclature of the neighbourhood buildings. So we arranged the pavilions and their placement and dimensioning was done according to the functions, taking into account the analyzes previously held.

The materials used are local materials interpreted in contemporary way, to provide a design in line with the traditional architecture of the place. We saw clay bricks as a more economical, efficient material for cladding the theater buildings. The wooden canopy is made out of locally grown material providing a low cost and sustainable sun protector. In addition to the aesthetic side, the canopy has a connecting function between these objects, creating half-open spaces, more intimate spaces for social interacting and also the play between shade and light gives it a whole new level of design.

Windows on the other hand placed in such composition and in colors give the building a touch of color and pleasant place indicating a sign that this building has educational facilities, public and social character.