



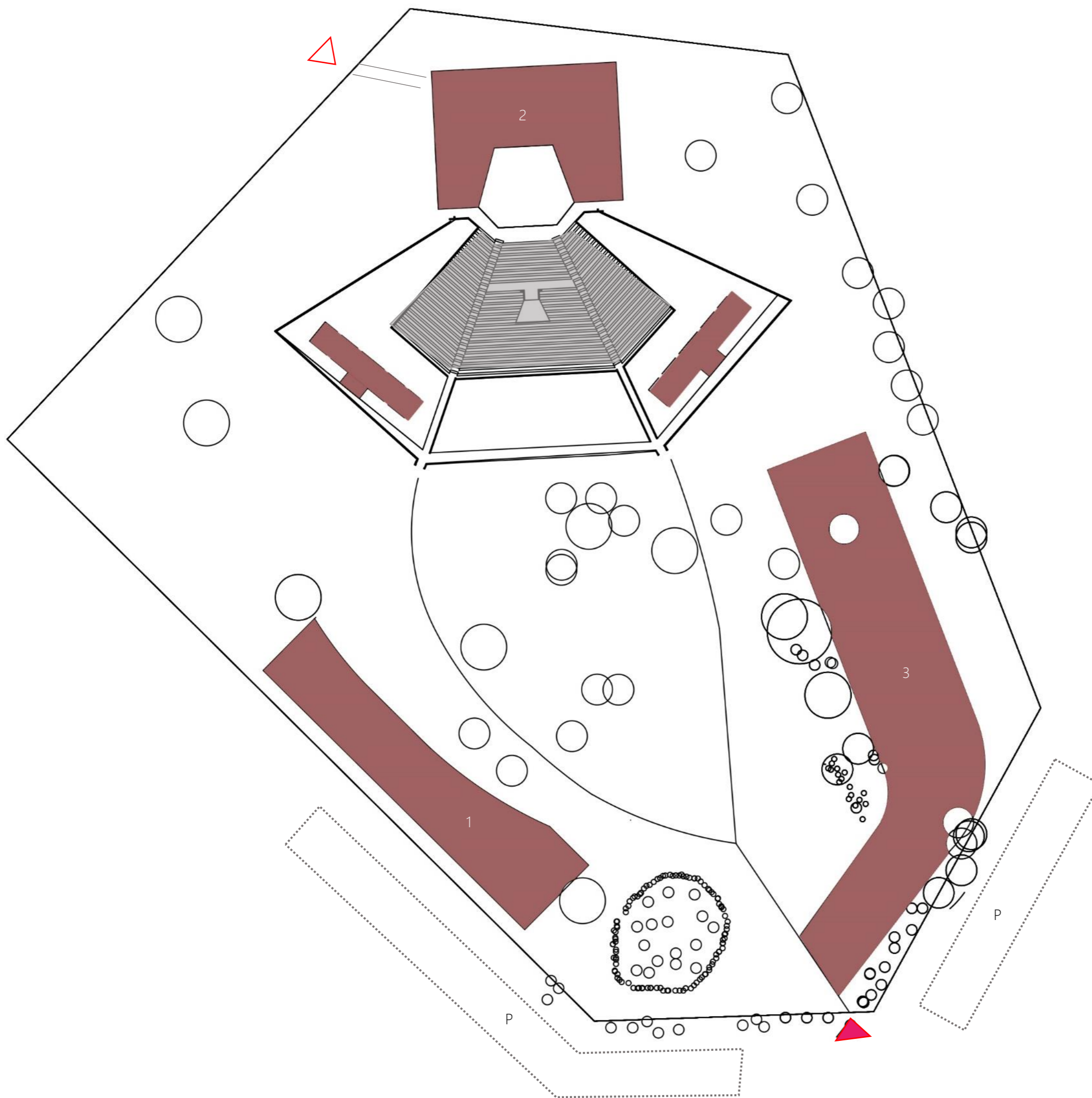
The site is one of the most beautiful and fertile in the north of Burkina Faso. The fields are the source of the wealth of the region. The first design was a simple structure with a roof of 20m x 20m. The second design was a more complex structure with a roof of 40m x 40m. The construction of the building will be carried out in a traditional way, using local materials and labor. The building will be a symbol of the region's wealth and the power of the people.


The complex has two main parts. The first is a series of rooms for the audience, the other is a stage. The stage is a simple structure with a roof of 20m x 20m. The audience rooms are a series of simple structures with a roof of 20m x 20m. The building will be a symbol of the region's wealth and the power of the people.



AMPHITEATER IN BURKINA FASO





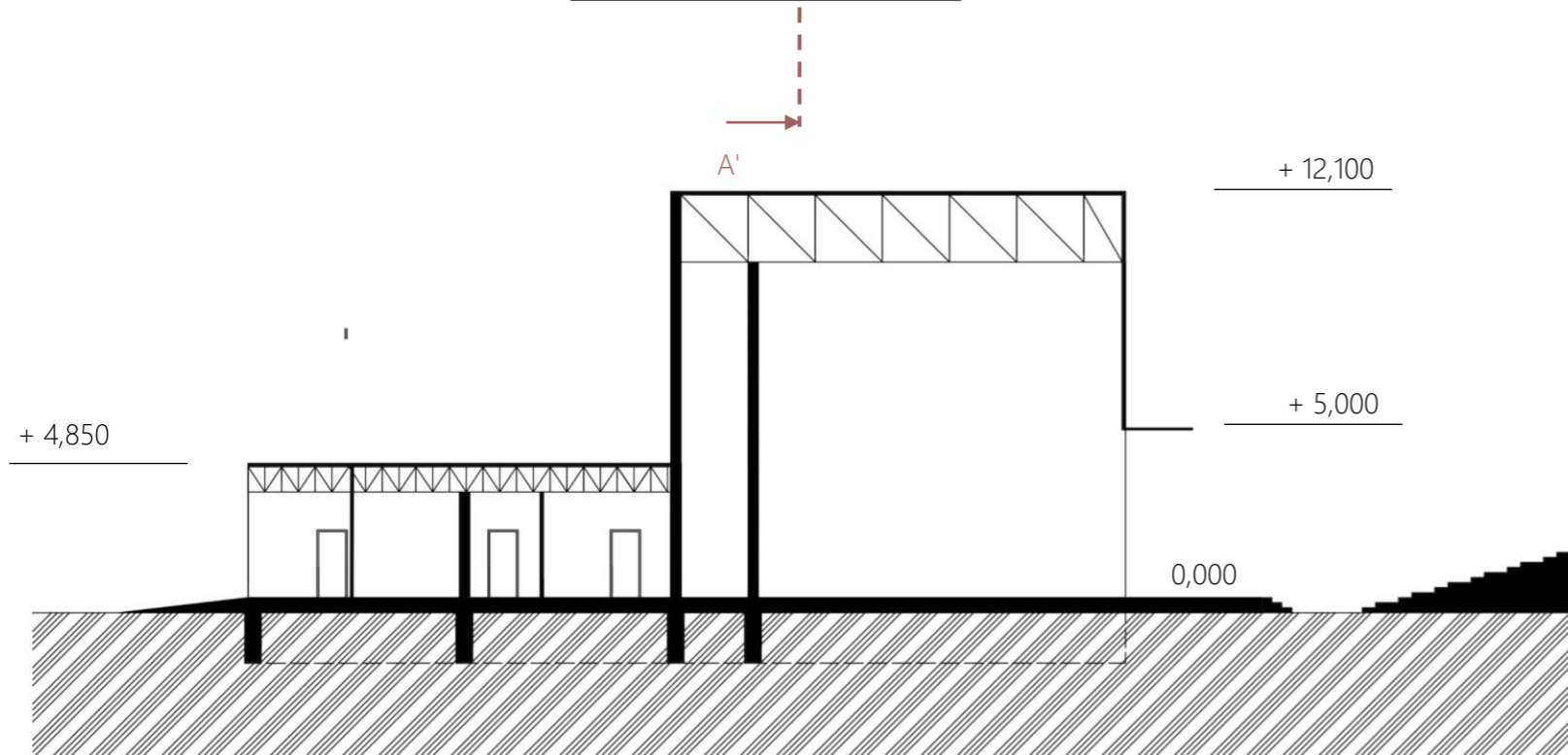
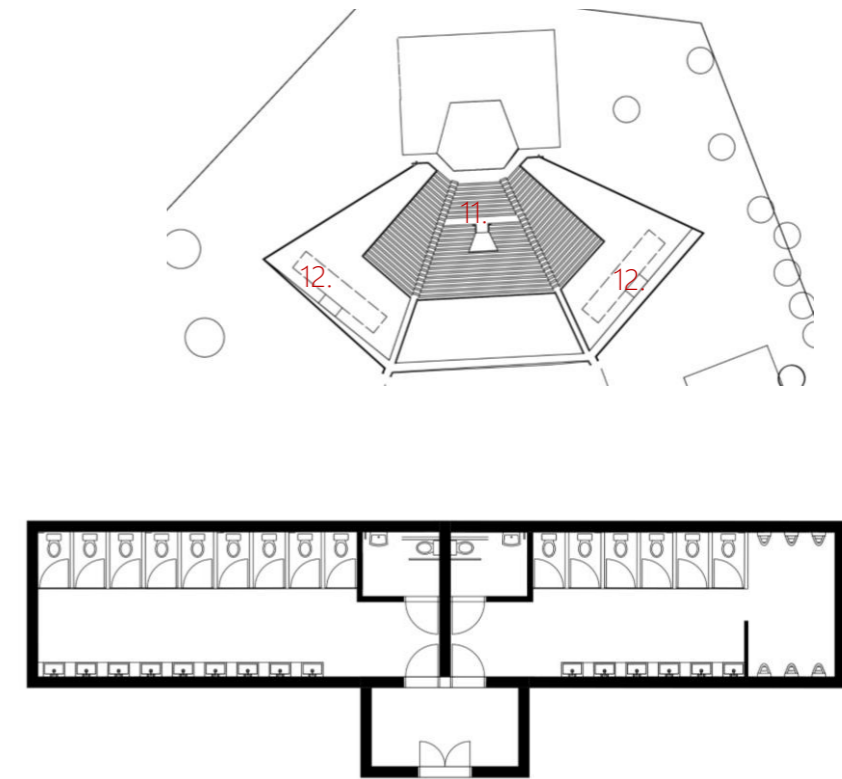
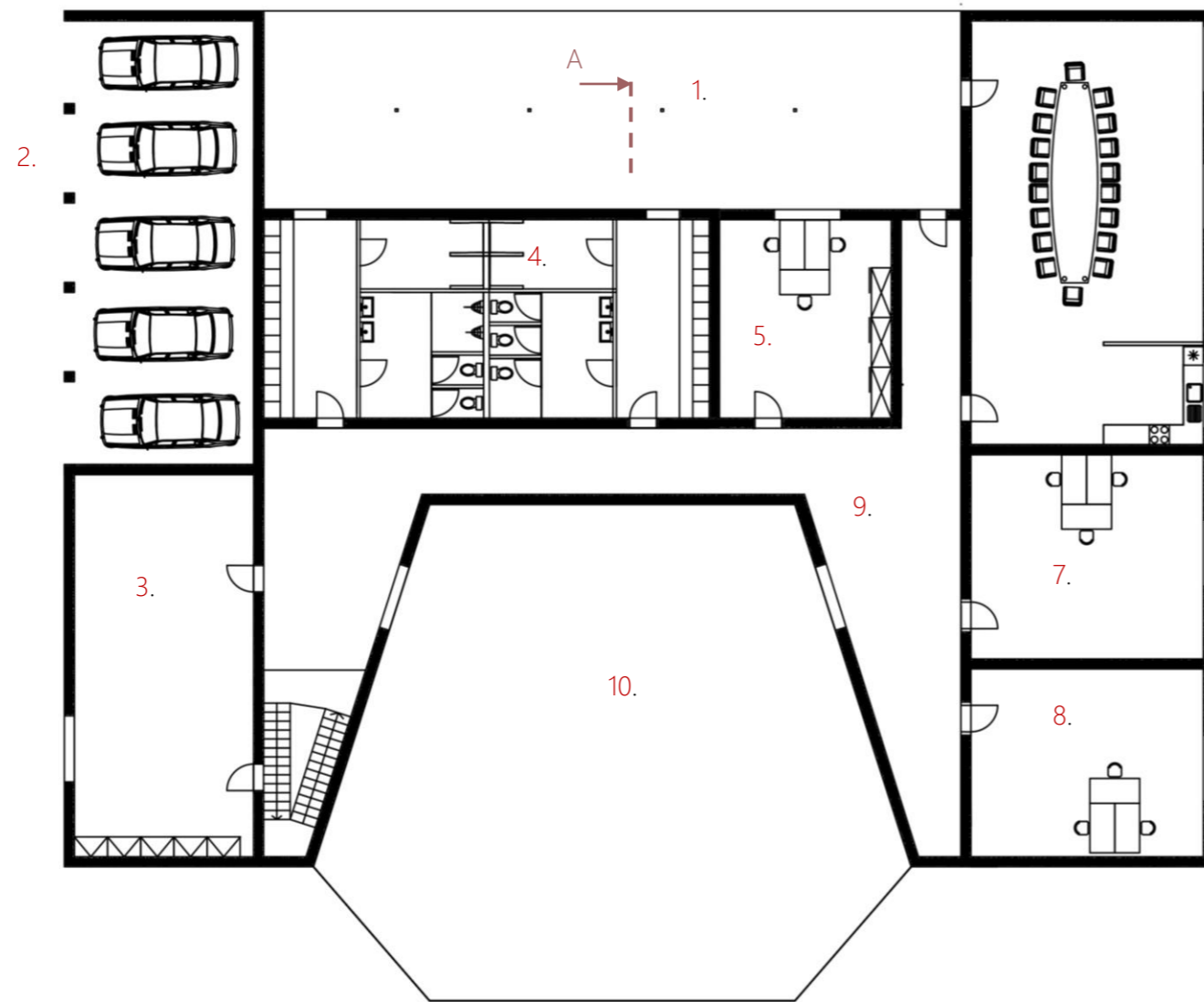
-  main entrance
-  entrance for supplies
-  existing object
-  new buildings
-  parking
-  trees
-  footpath
-  truck access
- 1 SHOW
- 2 WORK
- 3 LABO

0 5 15 30 m

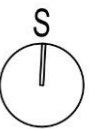


SITE PLAN

FLOOR PLAN + SECTION



1. open terrace	125,87 m ²
2. garage parking	73,38 m ²
3. room for construction and storage for stage sets	62,32 m ²
4. backstage	76,25 m ²
5. sewing workshop	31,02 m ²
6. meeting room with a kitchenette	89,56 m ²
7. room for technicians	42,22 m ²
8. room and workshop for repair and storage of technical equipment	39,71 m ²
9. corridor	119,18 m ²
10. stage	217,5 m ²
11. technical cabin room	18,47 m ²
12. restrooms	2x 90,4 m ²

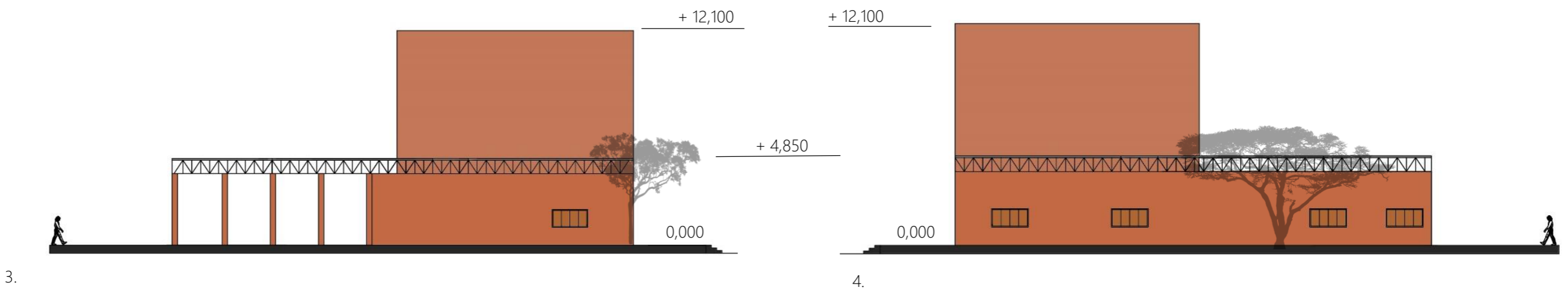
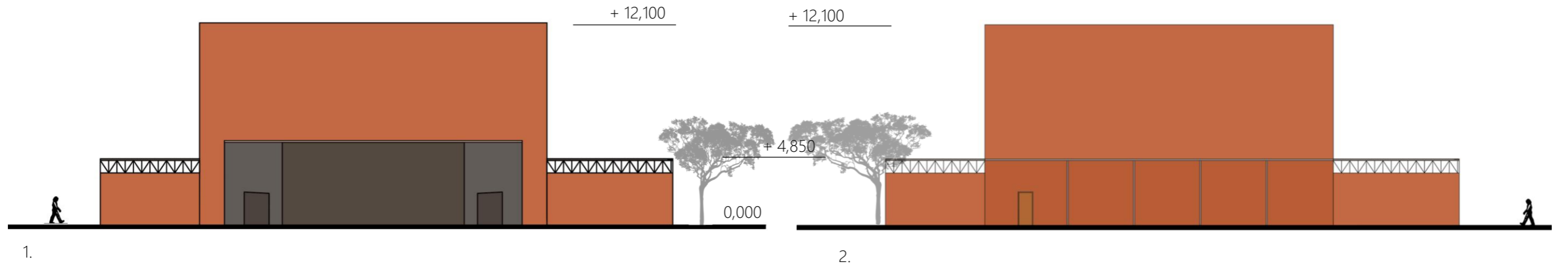
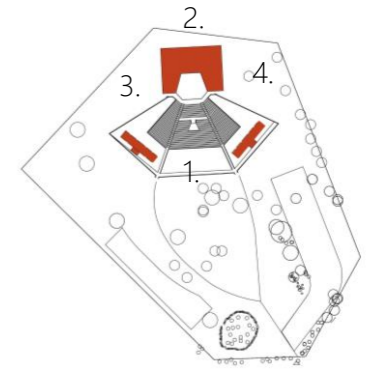


0 1 5 10 m

WORK ZONE

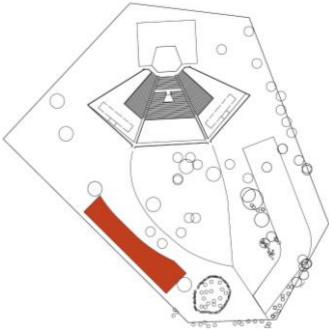
SECTION A- A'

VIEWS

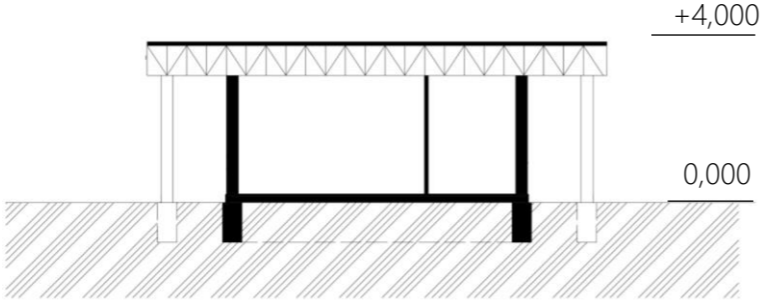


WORK ZONE

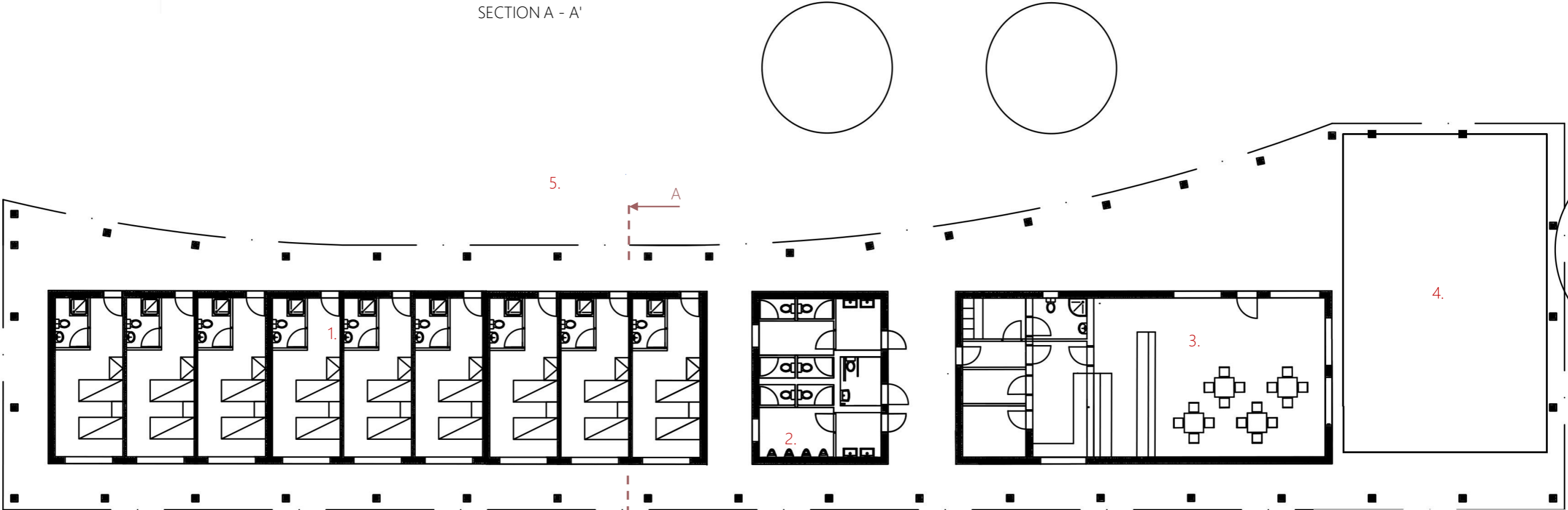
FLOOR PLAN + SECTION



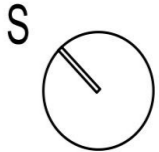
- 1. accommodation 185,43 m²
- 2. restrooms 33,55 m²
- 3. bistro 96,46 m²
- 4. place for performance 126 m²
- 5. place for temporary stalls



SECTION A - A'

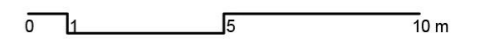
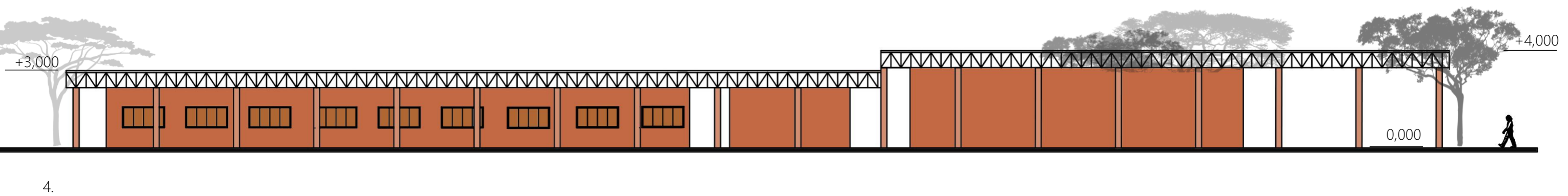
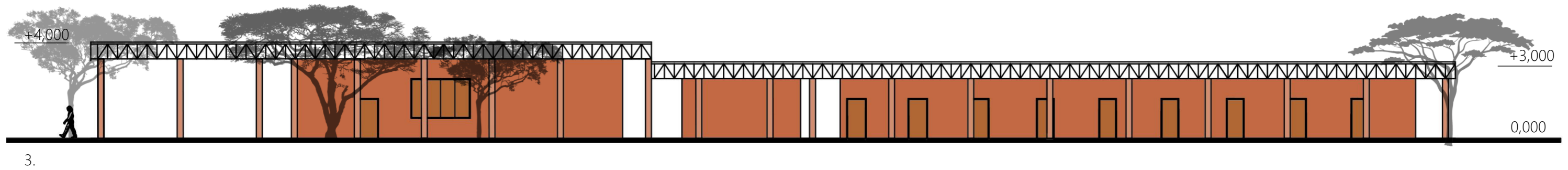
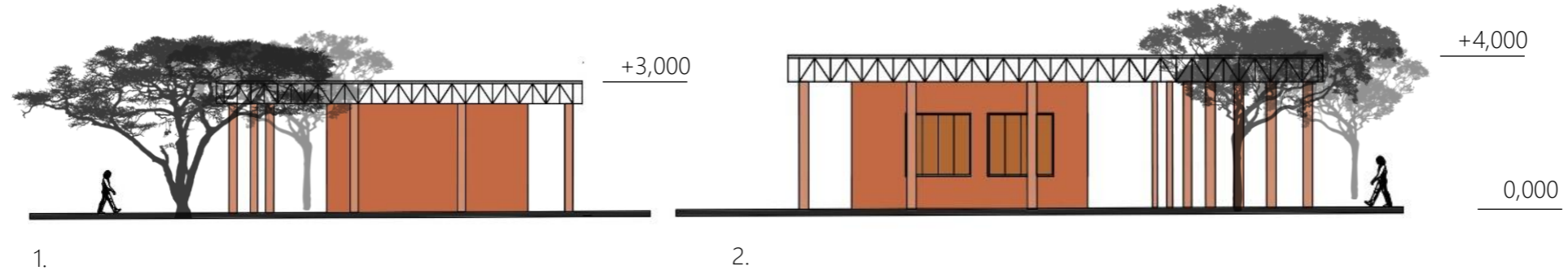
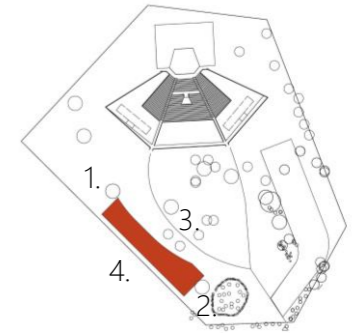


0 5 10 m



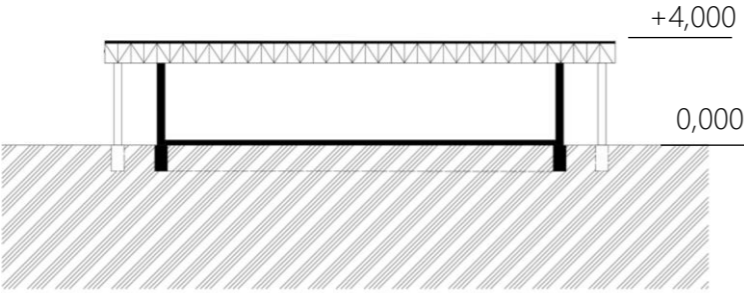
SHOW ZONE

VIEWS

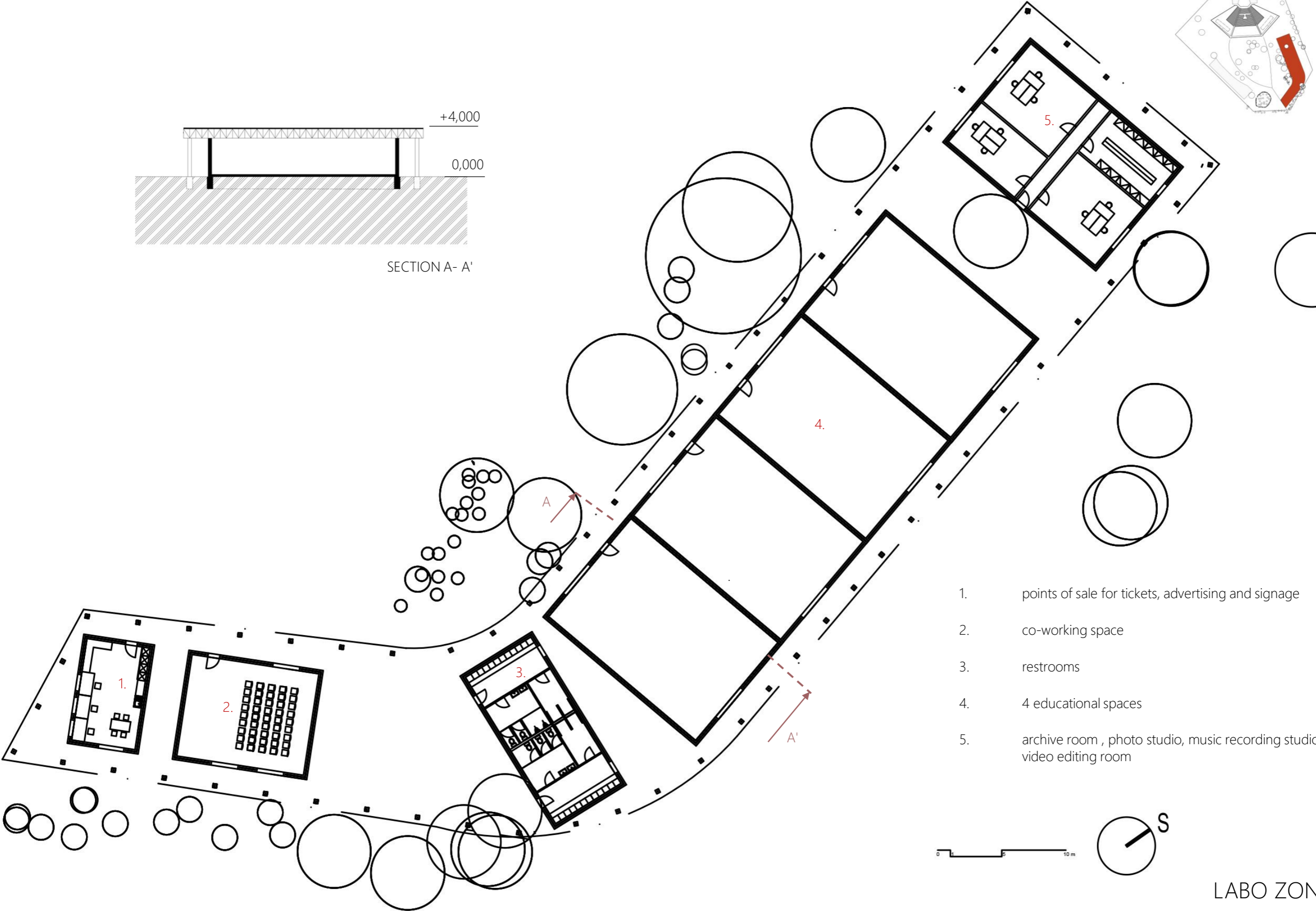
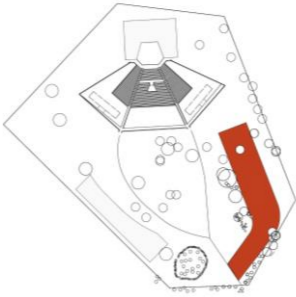


LABO ZONE

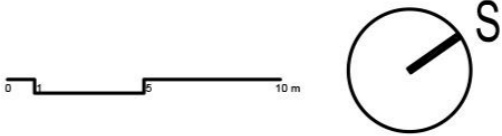
FLOOR PLAN + SECTION



SECTION A- A'

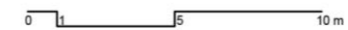
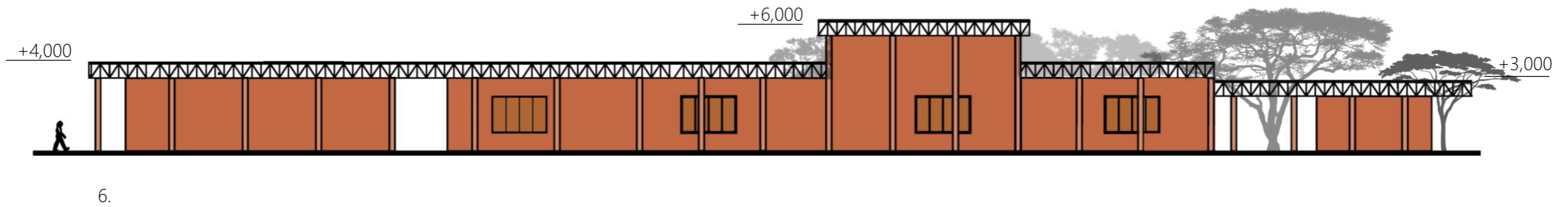
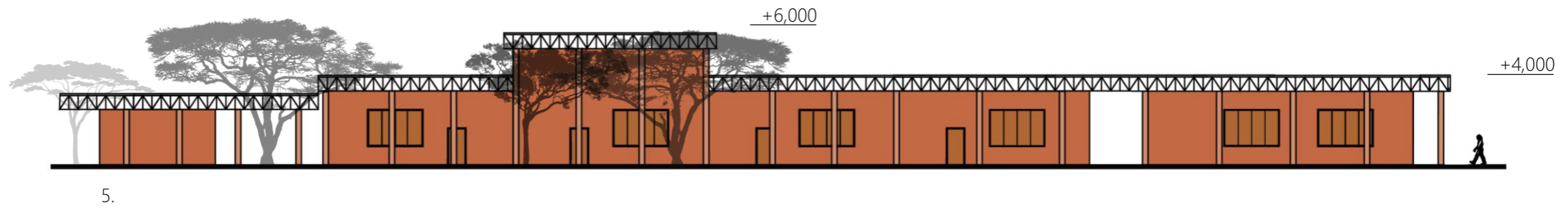
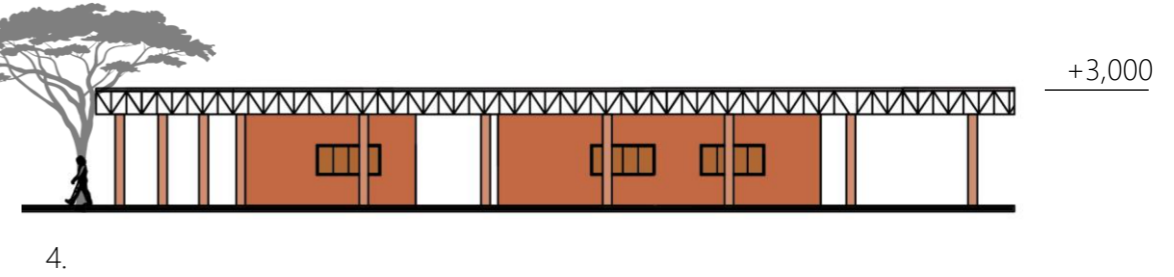
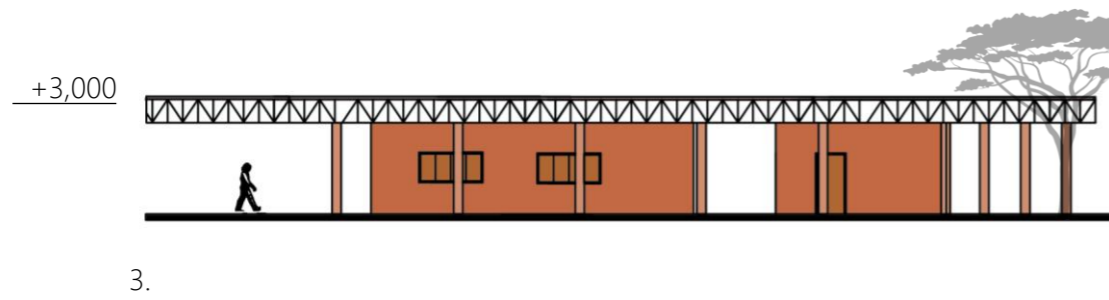
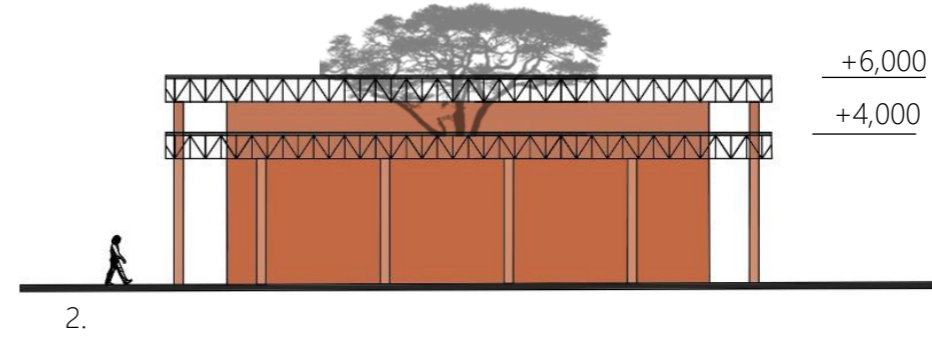
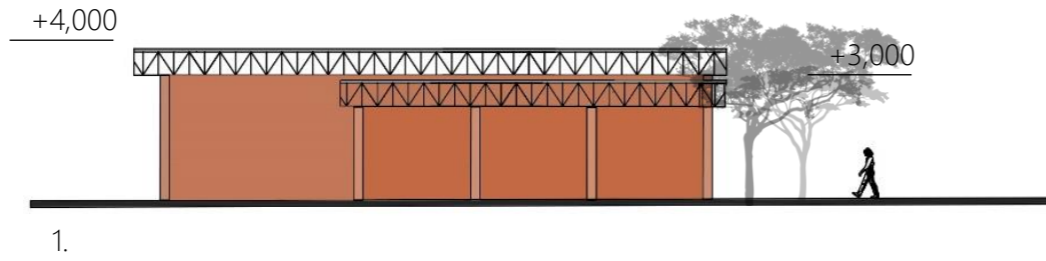
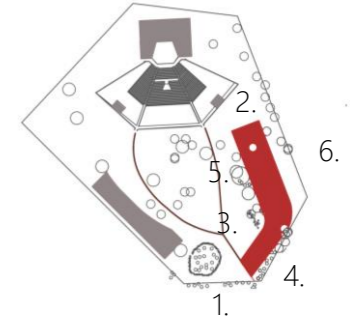


- 1. points of sale for tickets, advertising and signage 41,2 m²
- 2. co-working space 80 m²
- 3. restrooms 76,25 m²
- 4. 4 educational spaces 4 x 150 m²
- 5. archive room , photo studio, music recording studio, video editing room 150 m²

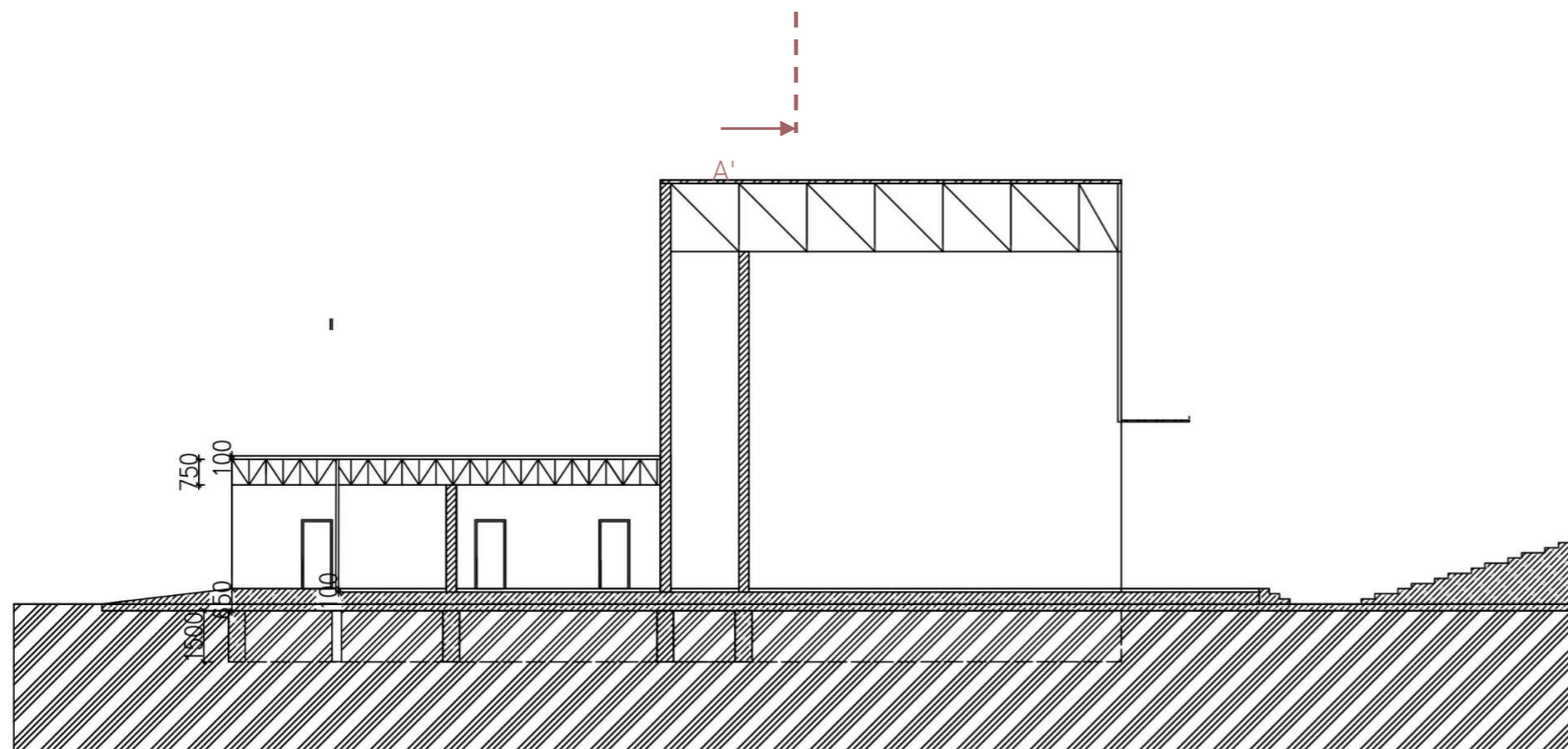
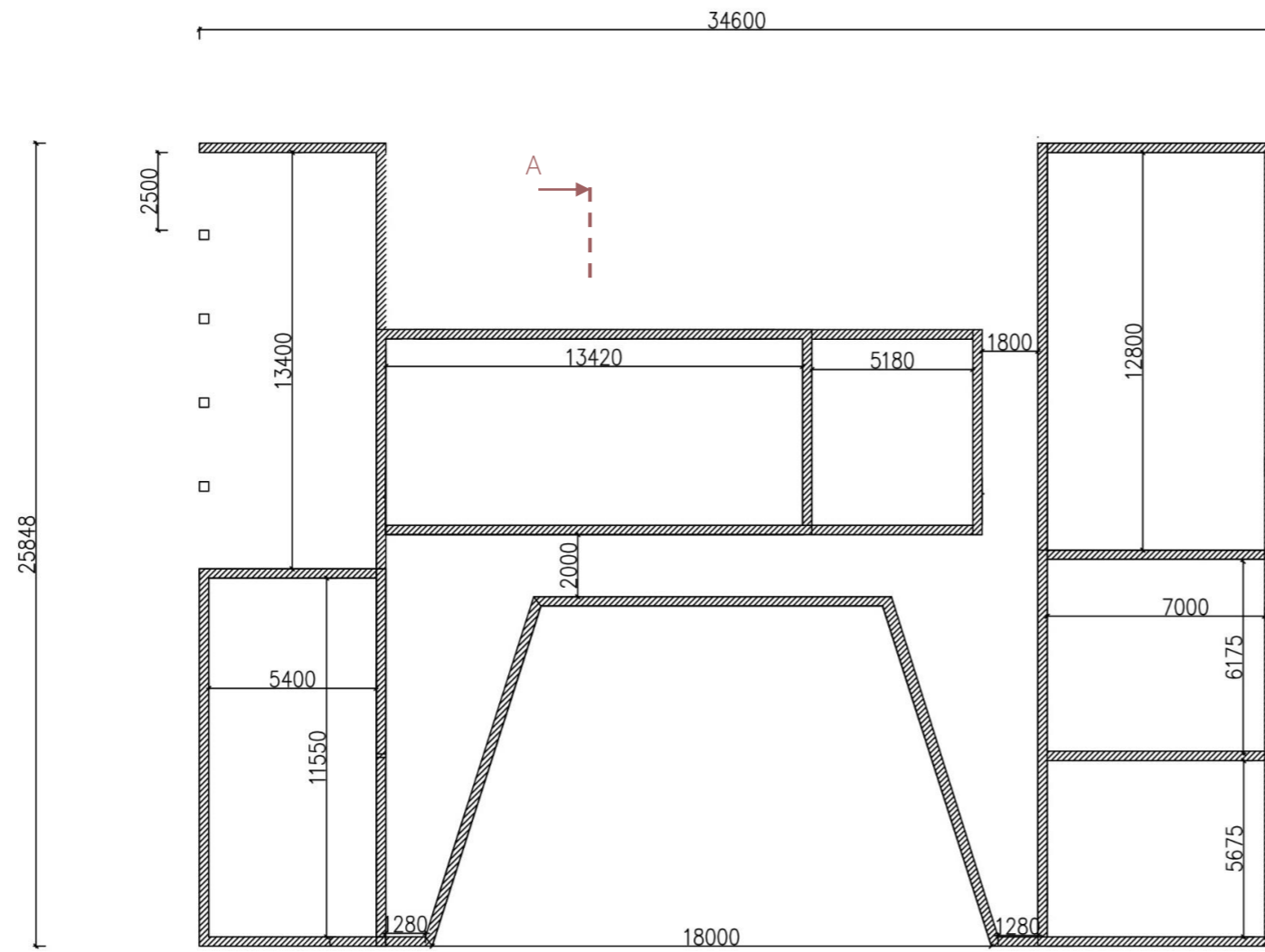


LABO ZONE

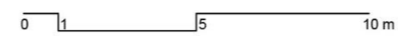
VIEWS



CONSTRUCTION IDEA



- unfired bricks measuring 300 x 300 mm
- ▨ load-bearing wall made of unfired bricks, 300 mm thick
- ▨ baseplate made of plain concrete, base strips made of plain concrete,
- ▨ sheet metal coverings 100 mm thick



SHOW ZONE



